

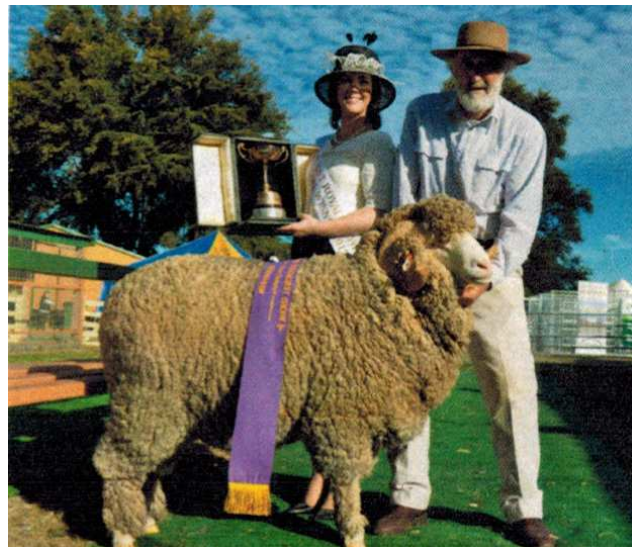
ROYALLA MERINO STUD

WINSTON & SUE McDONALD

“GLENROY”,
BACK NUBBA ROAD,
WALLENDREEN 2588

Phone: 02 6943 2536

Fax: 02 6943 2634



Bathurst Gold Cup Winner 2012

The Royalla stud was founded at Queanbeyan in 1980 using fine-medium Koonwarra bloodlines. Over the years several top Koonwarra, Merryville & Merryville daughter stud sires were used to produce a large frame sheep carrying a fleece around 19.5 microns.

Upon moving to Wallandbeen AI has been used extensively with pleasing results, lowering the micron and increasing the fleece weight and body weights.

Royalla aims to breed a large frame productive wool sheep carrying a 70's/66's wool with a micron around 18.5 to 19. Currently wool shorn from all ewes on “Glenroy” is about 18.5.

Top Roseville Park and Nerstane semen has been used in the fine and fine medium families including Newstane 43, RP2891 and Langdene 3626.

Royalla uses semen from one or two leading fine wool rams in each years A.I. program. Rams currently used are Langdene 4073 Supreme Australian Ram 2009, and Nerstane 910 Grand Champion at Dubbo 2011, East Strathglen “Shogun” Bendigo Supreme 2012.

Royalla continued to exhibit sheep at most local and some major shows, with a fair degree of success.

Recent highlights include:-

- ❖ Bathurst Gala Cup 2012
- ❖ Bathurst Grand Champion Ewe 2013
- ❖ Yass Champion Finewool Ram 2013
- ❖ Long time clients Geoff and Debbie Selmes - 2nd in Crookwell Flock Ewe Competition for third consecutive year with John and Michael Lowe 1st in the short wool section.

On Property Sale – Tuesday 17th September, 2013